

INSTALLER

OVERVIEW	2
PURPOSE OF THIS MANUAL	2
SCOPE OF DEFINITION.....	2
RELATED AND REFERENCE DOCUMENTS.....	2
TERMS AND DEFINITIONS.....	2
OVERVIEW OF THE APPLICATION FUNCTIONS	2
OVERVIEW OF THE FUNCTIONS.....	2
INSTALLING NECESSARY COMPONENTS	3
INSTALLING NECESSARY COMPONENTS.....	3
INSTALLING .NET Framework	4
INSTALLING C++ RUNTIME LIBRARY	4
WHERE TO DOWNLOAD EACH RUNTIME LIBRARY FROM	4
INSTALLATION	5
DOWNLOADING THE INSTALLER	5
INSTALLATION	6
UPDATING	8
DOWNLOADING THE INSTALLER	8
INSTALLATION	8
UNINSTALLATION	10
UNINSTALLATION.....	10

OVERVIEW

PURPOSE OF THIS MANUAL

EN01N80ZZZ010102001001

This manual describes how to download, install, and uninstall the HINO DX II Installer.

SCOPE OF DEFINITION

EN01N80ZZZ010102001002

This manual describes the following functions of the HINO DX II Installer (hereinafter, the Installer).

- Installing the HINO DX II
- Uninstalling the HINO DX II

RELATED AND REFERENCE DOCUMENTS

EN01N80ZZZ010102001003

Attribute	Document name	Version etc.	Issued by
-			

TERMS AND DEFINITIONS

EN01N80ZZZ010102001004

RUNTIME LIBRARY

- Definition: Program needed to execute HINO DX II .
Execution of HINO DX II requires two types of runtime libraries: .NET Framework 4.0 and Visual C++ 2010.
If any of them are not installed, the Installer will display a message telling you to download and install them before installing HINO DX II .

OVERVIEW OF THE APPLICATION FUNCTIONS

OVERVIEW OF THE FUNCTIONS

EN01N80ZZZ010102002001

THE INSTALLER HAS THE FOLLOWING FUNCTIONS:

- Installing HINO DX II
- Updating HINO DX II
- Downloading necessary runtime libraries
- Uninstalling HINO DX II

INSTALLING NECESSARY COMPONENTS

INSTALLING NECESSARY COMPONENTS

EN01N80ZZZ010102003001

1. INSTALL RUNTIME LIBRARIES NECESSARY TO EXECUTE HINO DX II .

HINT

- If the runtime libraries have been installed, skip these steps.
- The Installer automatically determines whether or not the runtime libraries have been installed.
- Automatic installation of the runtime libraries requires connection to the network.

2. EXECUTING THE INSTALLER

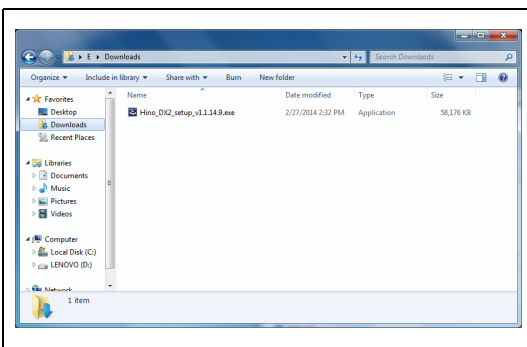
- (1) From Explorer, execute the Installer downloaded in 1.

NOTICE

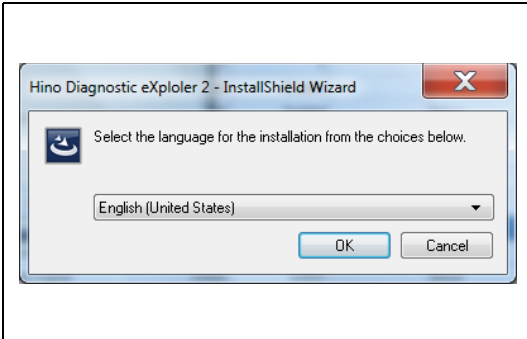
Installing necessary runtime libraries requires logging in Windows as an Administrator user.

If a security warning message appears

- For Windows7 and Vista, a security warning message may appear when the Installer is executed.
- When the security warning message appears, press [Yes] to continue.

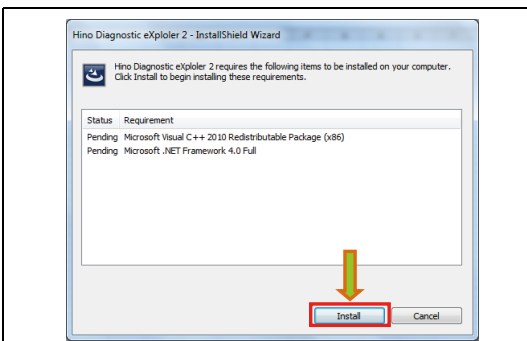


SHTS80ZZZ0100001



SHTS80ZZZ0100002

- (2) Select the language for installing the runtime libraries.



SHTS80ZZZ0100003

- (3) The [Runtime Library Install] screen appears.

- a. After this screen appears, press the [Install] button to install the runtime libraries.

NOTICE

- If this screen does not appear, go to "INSTALLATION."
- Installing the runtime libraries requires connection to the network. To continue the installation off-line, download and install the runtime libraries in advance.
- If the Installer is executed without installing the runtime libraries, the installation will fail.

INSTALLING .NET Framework

EN01N80ZZZ010102003002

1. INSTALL .NET Framework.

HINT

When the PC is connected to the network, the installer automatically download and install the runtime library.

INSTALLING C++ RUNTIME LIBRARY

EN01N80ZZZ010102003003

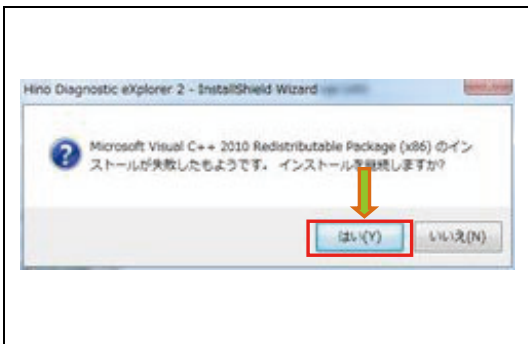
1. INSTALL THE C++ RUNTIME LIBRARY.

HINT

When the PC is connected to the network, the installer automatically download and install the runtime library.

If an error message appears

- When the C++ runtime library is installed, the error message shown in the figure may appear.
This error message appears when the C++ runtime library has already been installed. Press [Yes] to continue the installation.



SHTS80ZZZ0100004

WHERE TO DOWNLOAD EACH RUNTIME LIBRARY FROM

EN01N80ZZZ010102003004

1. DOWNLOAD THE .NET Framework 4.0 AND C++ RUNTIME LIBRARIES FROM THE FOLLOWING URLS:

- (1) If you cannot connect to the network or you cannot download them for other reasons, contact the administrator to get the CD or other media.
 - Where to download .NET Framework 4.0 from (Microsoft's site)
<http://www.microsoft.com/ja-jp/download/details.aspx?id=17718>
 - Where to download C++ runtime library from (Microsoft's site)
<http://www.microsoft.com/ja-jp/download/details.aspx?id=5555>

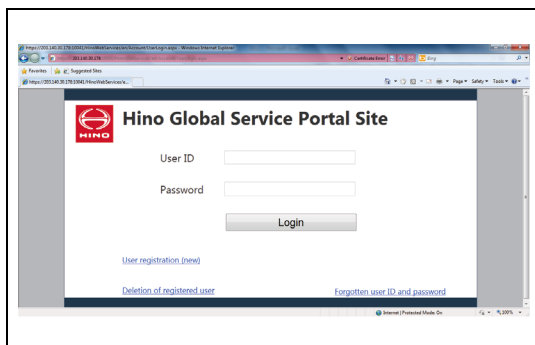
INSTALLATION

DOWNLOADING THE INSTALLER

EN01N80ZZZ010102004001

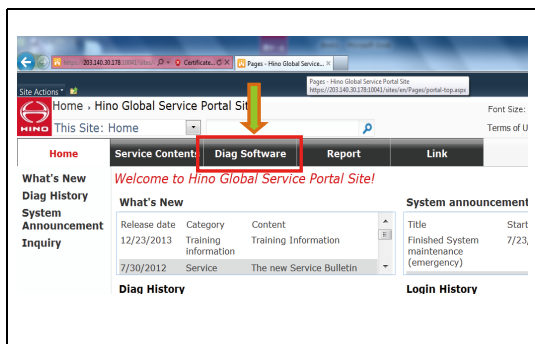
WHERE TO DOWNLOAD THE LATEST VERSION OF THE INSTALLER FROM

1. THE LATEST VERSION OF THE INSTALLER IS REGISTERED IN THE PORTAL SITE.
2. HOW TO DOWNLOAD THE LATEST VERSION OF THE INSTALLER
 - (1) Log in the Portal Site.



SHTS80ZZZ0100005

- (2) On the Menu screen, select [Diag Software]

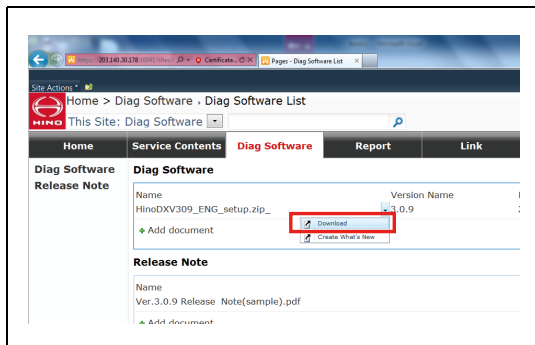


SHTS80ZZZ0100006

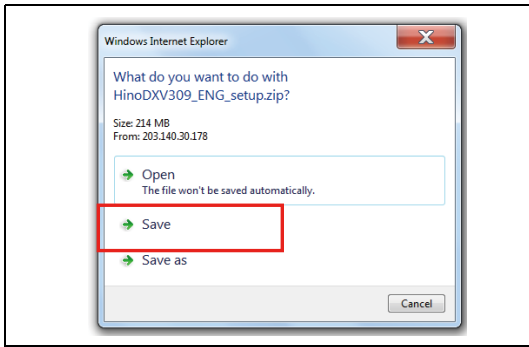
- (3) Check the box next to the file displayed in the [Diag Software] library. Press the [Download] button to start downloading.

HINT

For more information on the operation of the Portal Site, refer to the "Portal Site Operation Manual."



SHTS80ZZZ0100007



SHTS80ZZZ0100008

- (4) Save the file.



SHTS80ZZZ0100009

- (5) After downloading is completed, open the save folder.

HINT

The actual file name may differ from that shown in this manual.

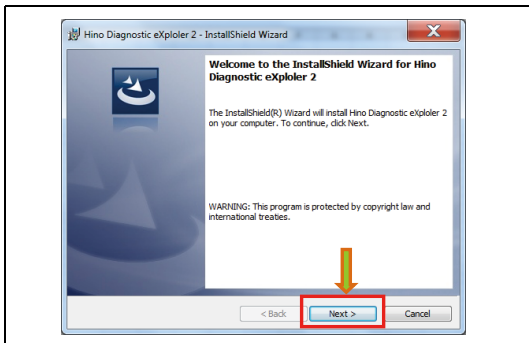
INSTALLATION

EN01N80ZZZ010102004002

INSTALLATION

1. AFTER COMPLETING "INSTALLING NECESSARY COMPONENTS"

- (1) Confirm the message and press the [Next] button.



SHTS80ZZZ0100010

When the program maintenance screen appears

- When the same version of the Installer is executed twice, the program maintenance screen appears.
- You do not need to change any settings for HINO DX II . Modify, delete, or cancel the Installer.



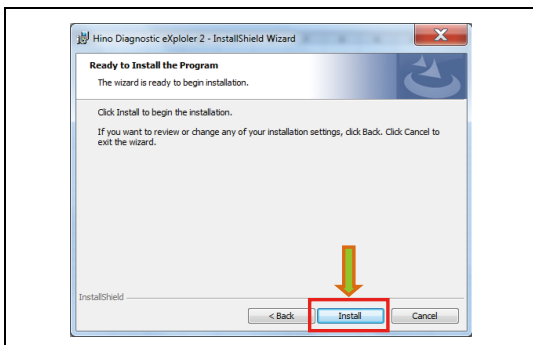
SHTS80ZZZ0100011

- (2) Confirm the Software License Agreement and then select "I accept the terms in the license agreement."



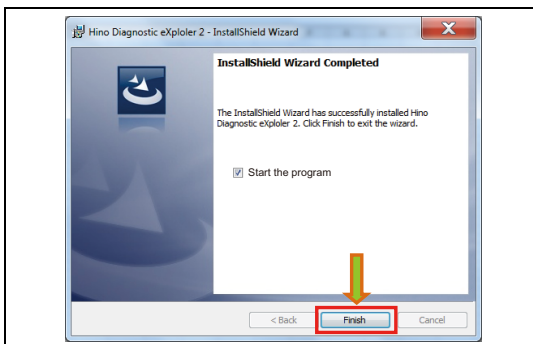
SHTS80ZZZ0100012

(3) Press the [Next] button.



SHTS80ZZZ0100013

(4) Press the [Install] button to start the installation.



SHTS80ZZZ0100014

(5) If you do not start HINO DXII after installation, uncheck "Start the program" and then press the [Finish] button.

HINT

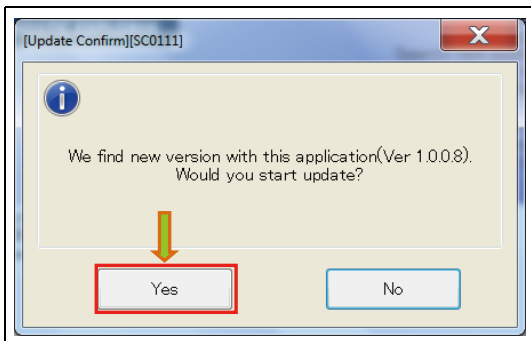
When the [Finish] button is pressed with "Start the program" checked, HINO DX II starts after the Installer is installed.

UPDATING

DOWNLOADING THE INSTALLER

EN01N80ZZZ010102005001

1. WHEN HINO DXII IS EXECUTED BY LOGGING IN THE PORTAL SITE, THE LATEST VERSION OF HINO DX II IS SEARCHED, AND IF IT EXISTS, THIS MESSAGE APPEARS.

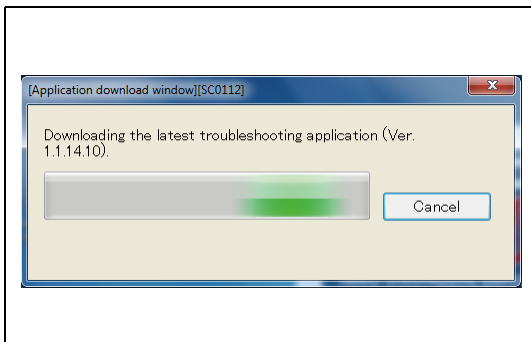


SHTS80ZZZ0100015

- (1) Press the [Yes] button to download the Installer.
- (2) When downloading is completed, the Installer is automatically executed and HINO DX II exits.

HINT

Then, follow the procedure given in "INSTALLATION."



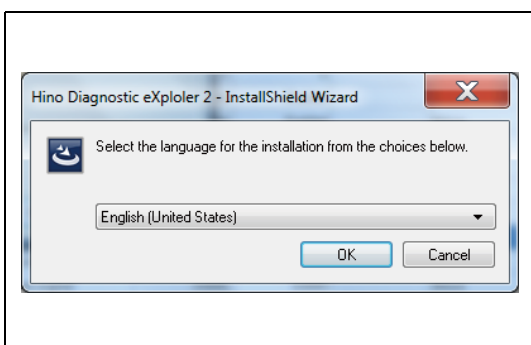
SHTS80ZZZ0100016

INSTALLATION

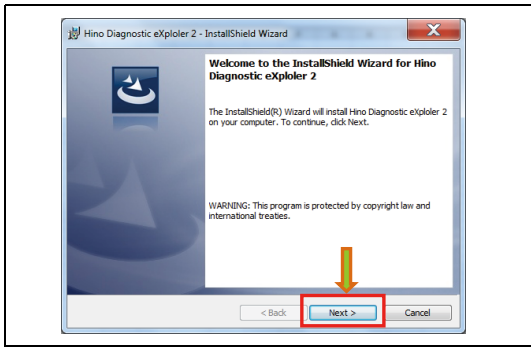
EN01N80ZZZ010102005002

1. INSTALLATION

- (1) Select the language for installing HINO DX II and then select the [OK] button.



SHTS80ZZZ0100017

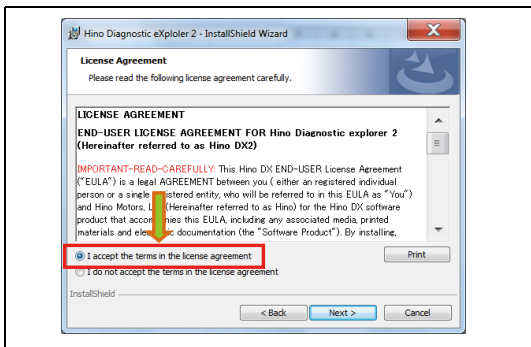


SHTS80ZZZ0100018

(2) Confirm the message and press the [Next] button.

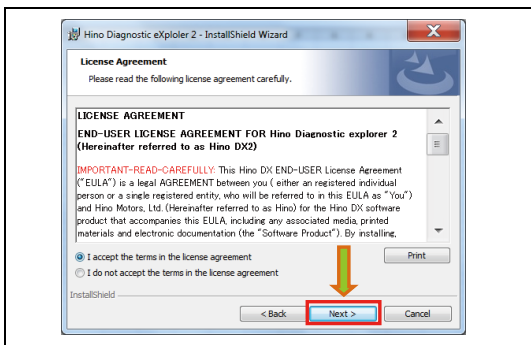
When the program maintenance screen appears.

- When the same version of the Installer is executed twice, the program maintenance screen appears.
- You do not need to change any settings for HINO DX II . Modify, delete, or cancel the Installer.



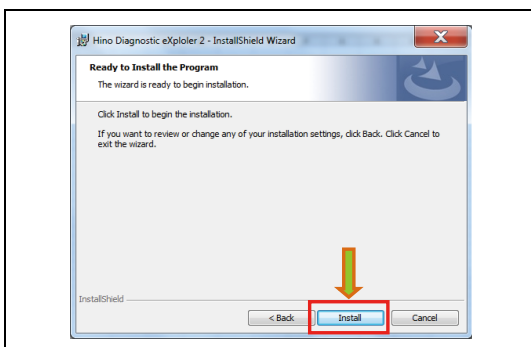
SHTS80ZZZ0100019

(3) Confirm the Software License Agreement and then select "I accept the terms in the license agreement."



SHTS80ZZZ0100020

(4) Press the [Next] button.



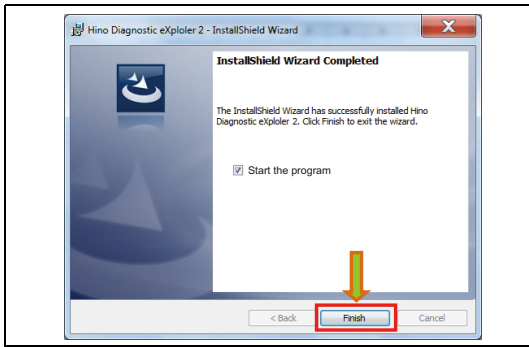
SHTS80ZZZ0100021

(5) Press the [Install] button to start the installation.

- (6) If you do not start HINO DX II after installation, uncheck "Start the program" and then press the [Finish] button.

HINT

When the [Finish] button is pressed with "Start the program" checked, HINO DX II starts after the Installer is installed.



SHTS80ZZZ0100022

UNINSTALLATION

UNINSTALLATION

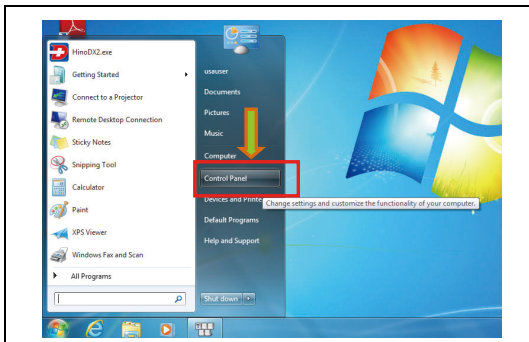
EN01N80ZZZ010102006001

NOTICE

Note that uninstalling HINO DX II deletes all the login user information for HINO DX II .

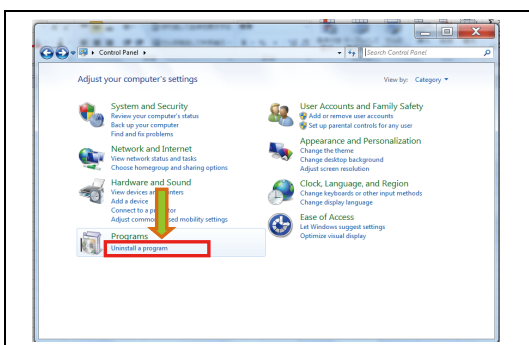
1. UNINSTALLATION

- (1) Click [Start Menu] and then [Control Panel].



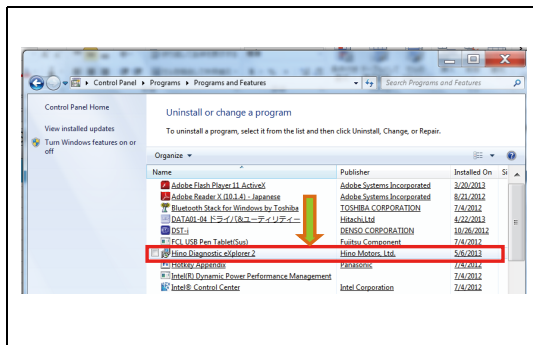
SHTS80ZZZ0100023

- (2) Click [Uninstall a programs].



SHTS80ZZZ0100024

- (3) Double-click "Hino Diagnostic eXplorer 2."

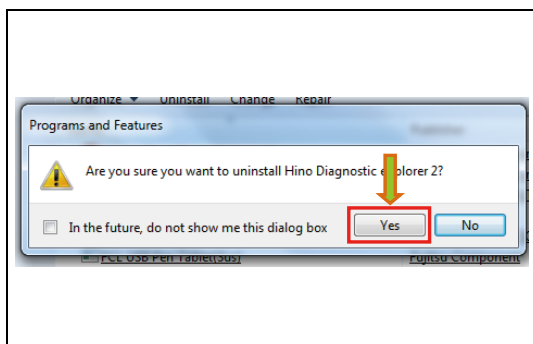


SHTS80ZZZ0100025

- (4) Confirm the message and press the [Yes] button.

If a security warning message appears

- For Windows7 and Vista, a security warning message may appear when the Installer is executed.
- When the security warning message appears, press [Yes] to continue.



SHTS80ZZZ0100026

- (5) Uninstallation is completed.

HINT

- Uninstalling HINO DX II does not delete the files downloaded by HINO DX II or the operation history.
- If these files are no longer needed, delete the folders and files under C:\HinoServiceApplications\HinoDX2.